



AgroNode takes into account the genetic characteristics of varieties and hybrids.

How does it work?

The department creates:

- *digital profiles of varieties and hybrids:
- *nitrogen requirement
- *stress response
- *developmental phases (BBCH)
- *yield potential.

The platform analyzes:

- *satellite data
- *weather conditions
- *agrochemical indicators.

And generates a recommendation:

"Your crops are entering a critical phase of development. It is recommended to apply X kg/ha of nitrogen over 5 days."

The first product of the platform:

Differentiated fertilizer calculator

Data sources:

- ⇒ Sentinel and Planet satellites
- ⇒ agrochemical analyses
- ⇒ field history
- ⇒ crop rotation.



AgroNode creates an AI assistant for an agronomist that works on the basis of a local scientific base.



Example

A farmer asks: "Why is the wheat in my field turning yellow?"

AI analyzes:

- *soil
- *satellite maps
- *weather conditions
- *scientific studies of the region.

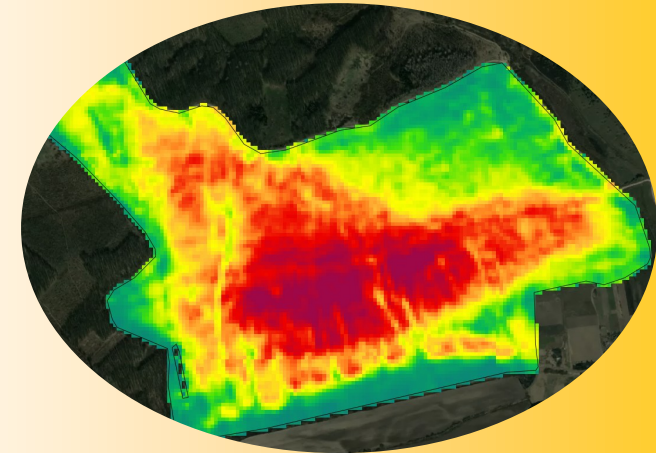
And offers a sound agronomic solution.



AgroNode - next-generation digital agronomy



**AgroNode:
Science in the field**



Scientific Field Engine

A digital precision farming platform that combines agricultural science and real fields



Ihor DIDUR
Project Manager
Director of the ESI
Doctor of Agricultural Sciences,
Professor

Unlike most agricultural platforms, **AgroNode** uses local scientific models created by the Department of Agriculture, Soil Science and Agrochemistry for specific soil and climatic conditions.



As a result, the farmer receives **precise recommendations** for his field, rather than standard advice.



The farmer receives scientifically based fertilizer application maps.

AgroNode - is an innovative digital tool that integrates:

- * satellite monitoring
- * agrochemical soil analyses
- * agronomic data
- * university scientific models

Monetization model

SaaS subscription

Farmer pays for platform usage: \$1-3 per hectare per year

The package includes:

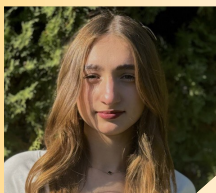
- * satellite monitoring
- * fertility maps
- * differential application maps
- * AI consultations.

★ Concept

AgroNode is a platform where precision farming algorithms work based on scientific models, not averaged global formulas.



Lina BRONNIKOVA
responsible executor



Daria ZOC
project manager



Diana BAGRIY
project manager



Vadym BOYKO
project manager



Olha MATSERA
responsible executor, PhD

CONTACT ADDRESS:
21008, Vinnytsia, Sonyachna St., 3,
tel. +38 (0432) 43-72-30